

Operational Forum Meeting



23 January 2016, 10:30 AM

Radisson Grafton Hotel, 130 Tottenham Court Road, London.

System Management Principles Statement



- **Summary of balancing actions and breaches for December 2016**
- **Performance compared to last year**

Summary Report

January 2017

	Jan-17
Total Number of Buy Actions	15
Total Number of Sell Actions	0
Total	15

	Jan-17	Jan-16
Number of Balancing Actions (Calendar year to date)	15	22

Operational Overview

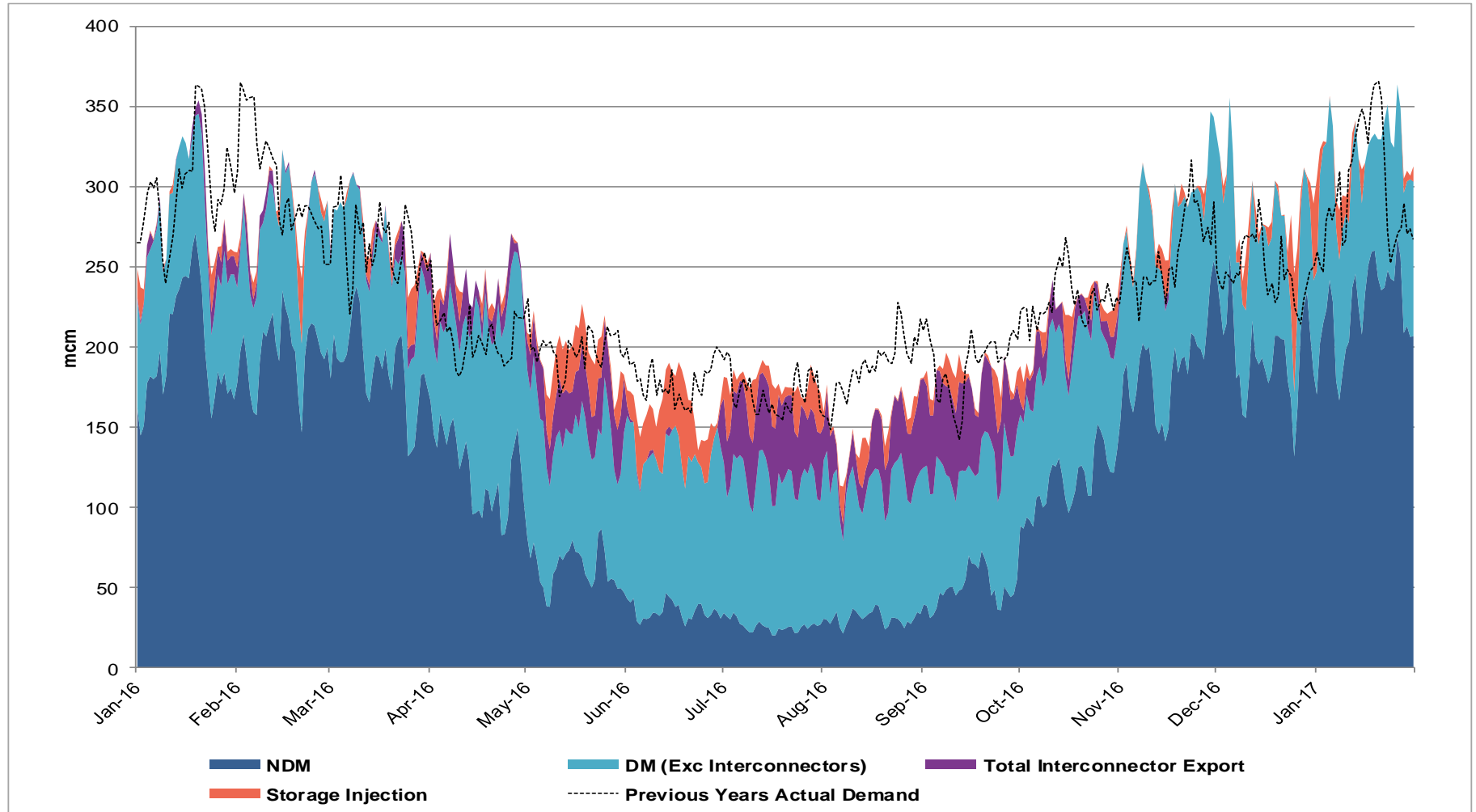


Demands



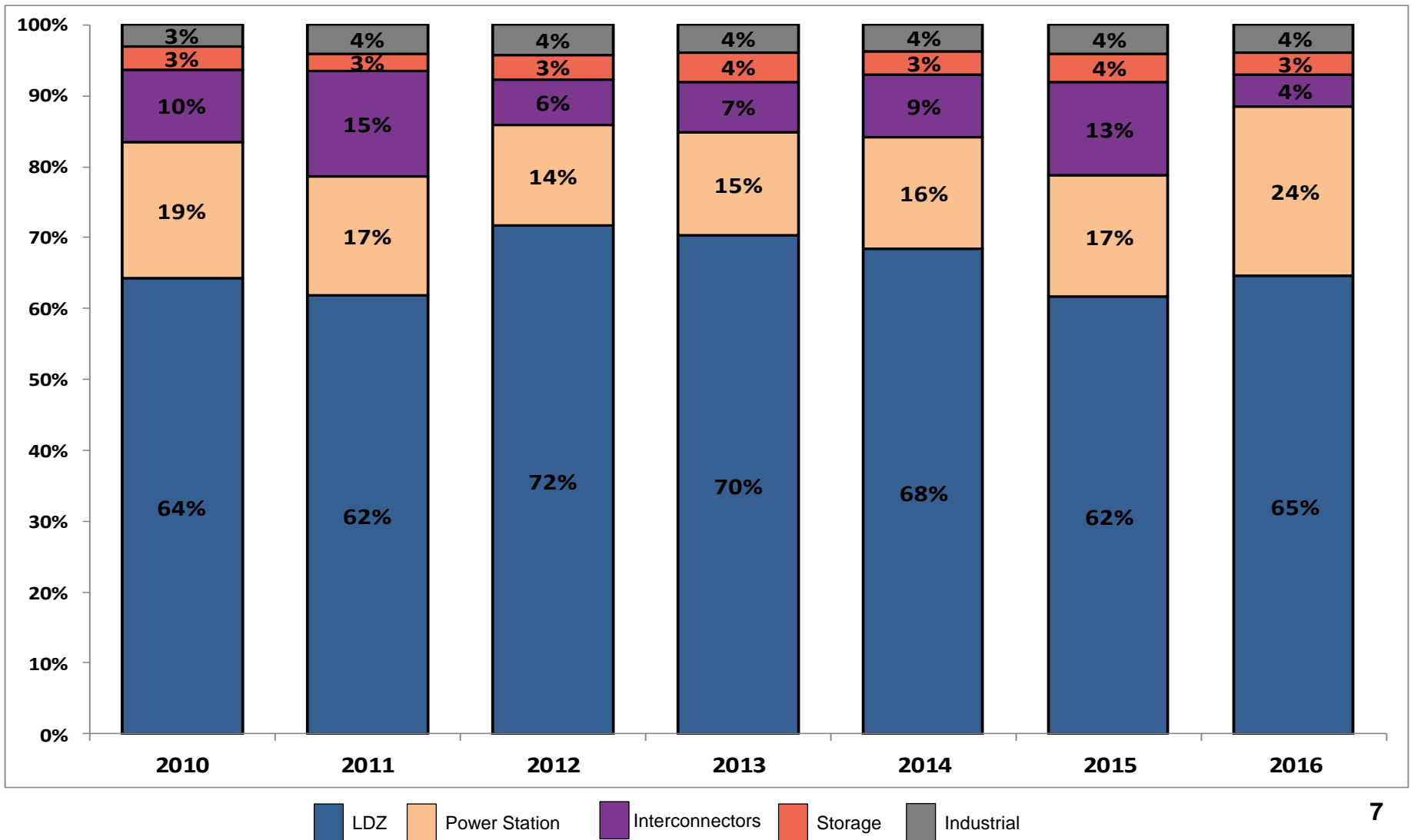
Gas Demand Breakdown

1st January 2016 to 31st January 2017 vs Previous Year



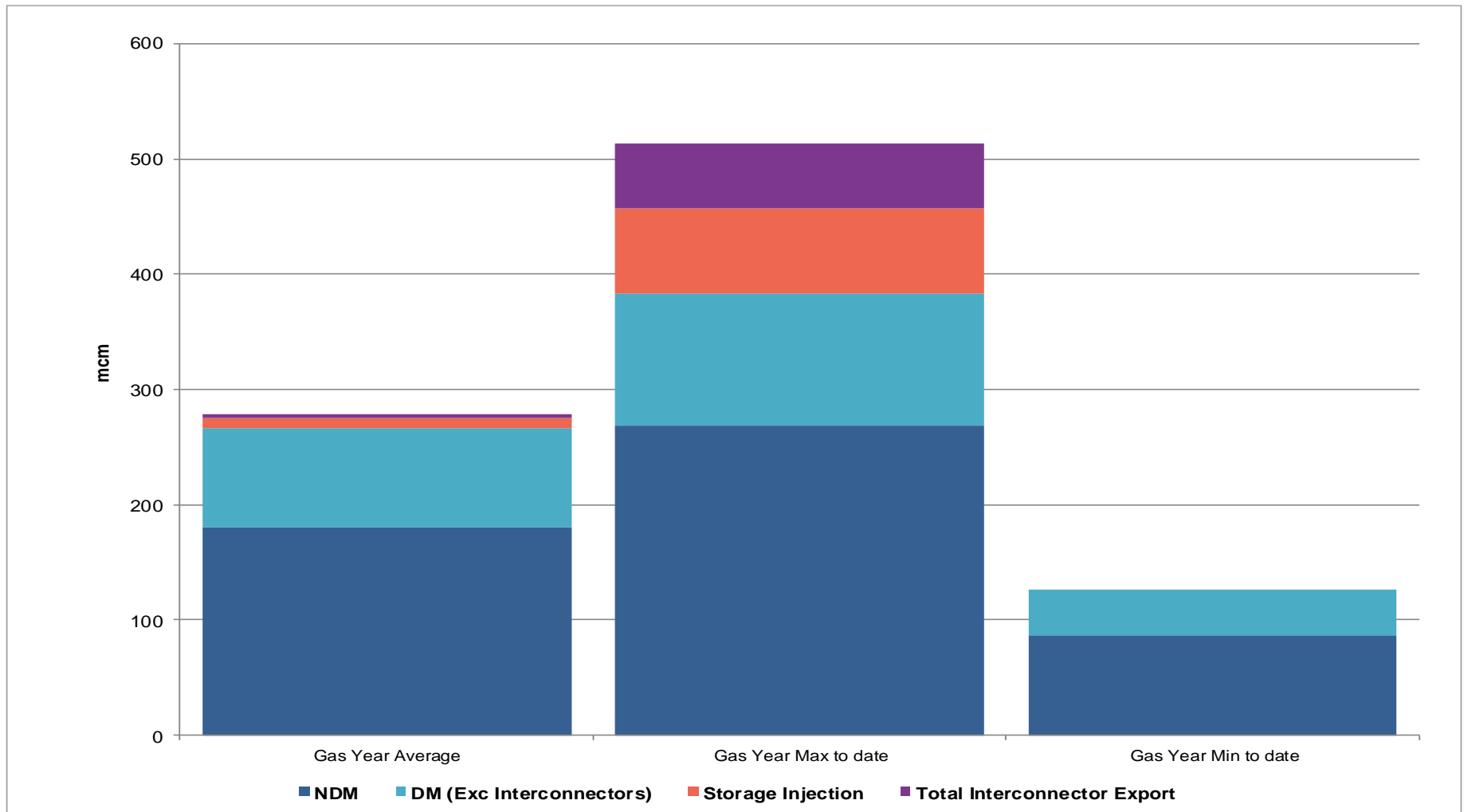
Gas Demand Breakdown

1st October 2016 to 31st January 2017 vs Same Period in Previous Years



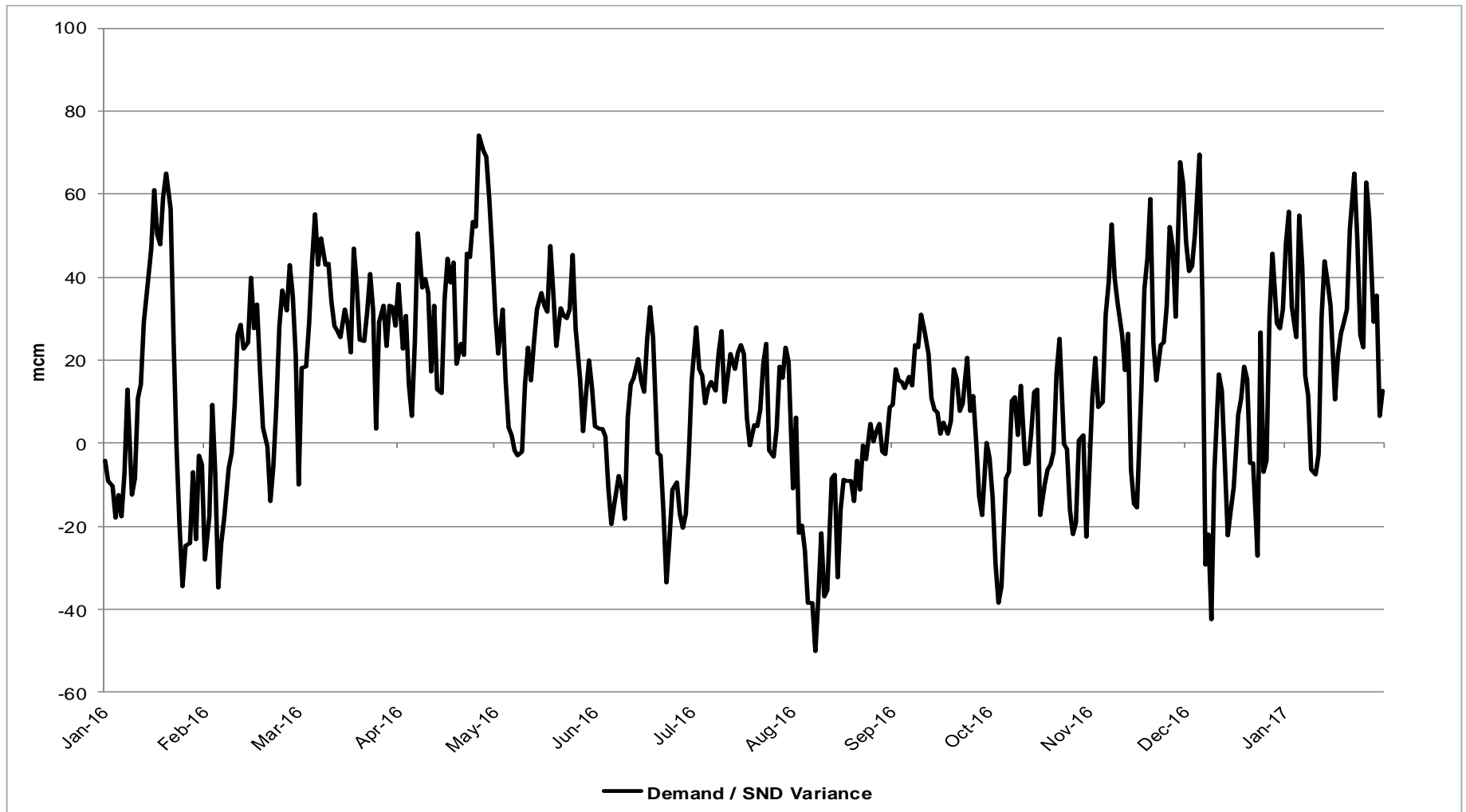
Gas Demand Statistics

1st October 2016 to 31st January 2017



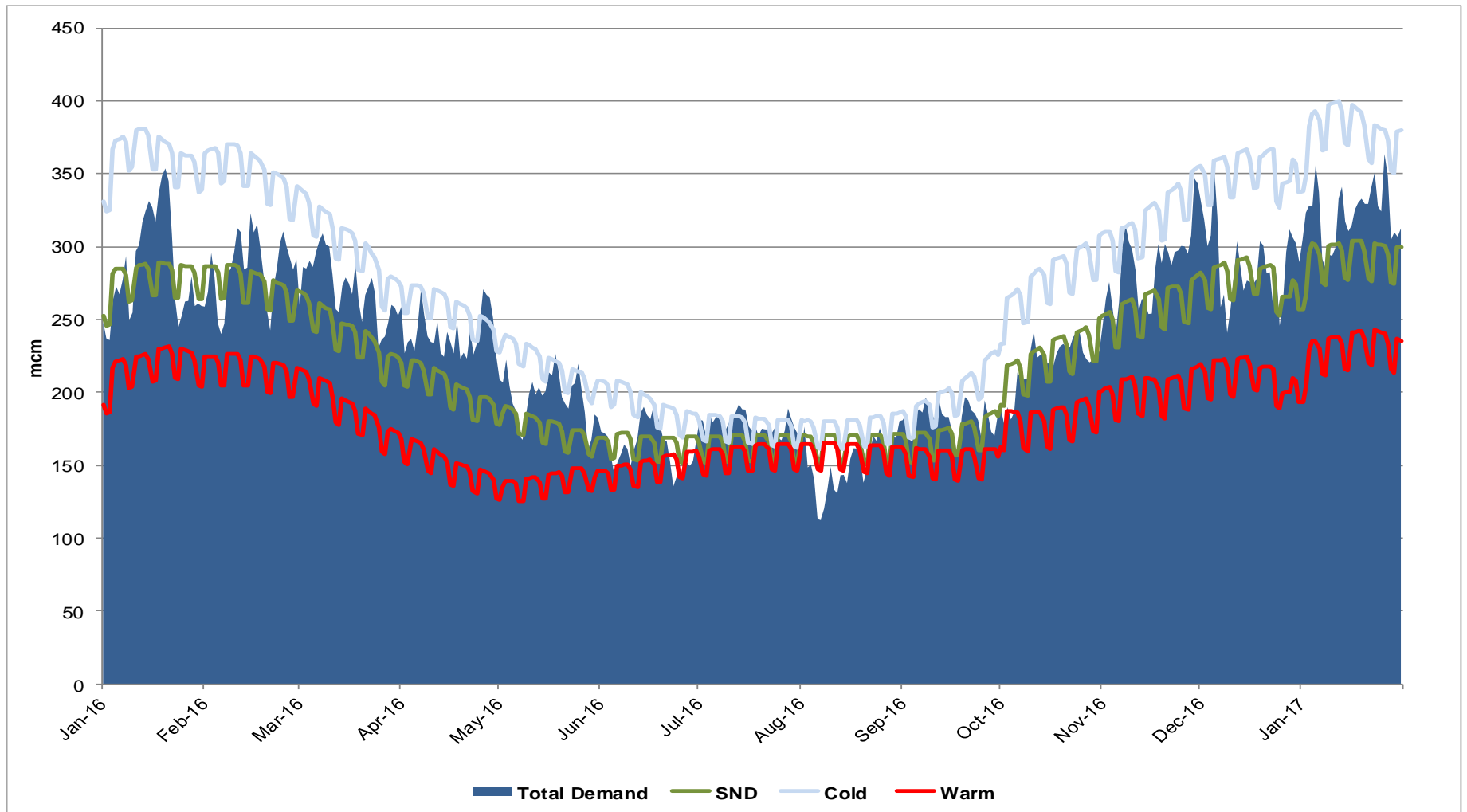
Demand Variance from SND

1st January 2016 to 31st January 2017



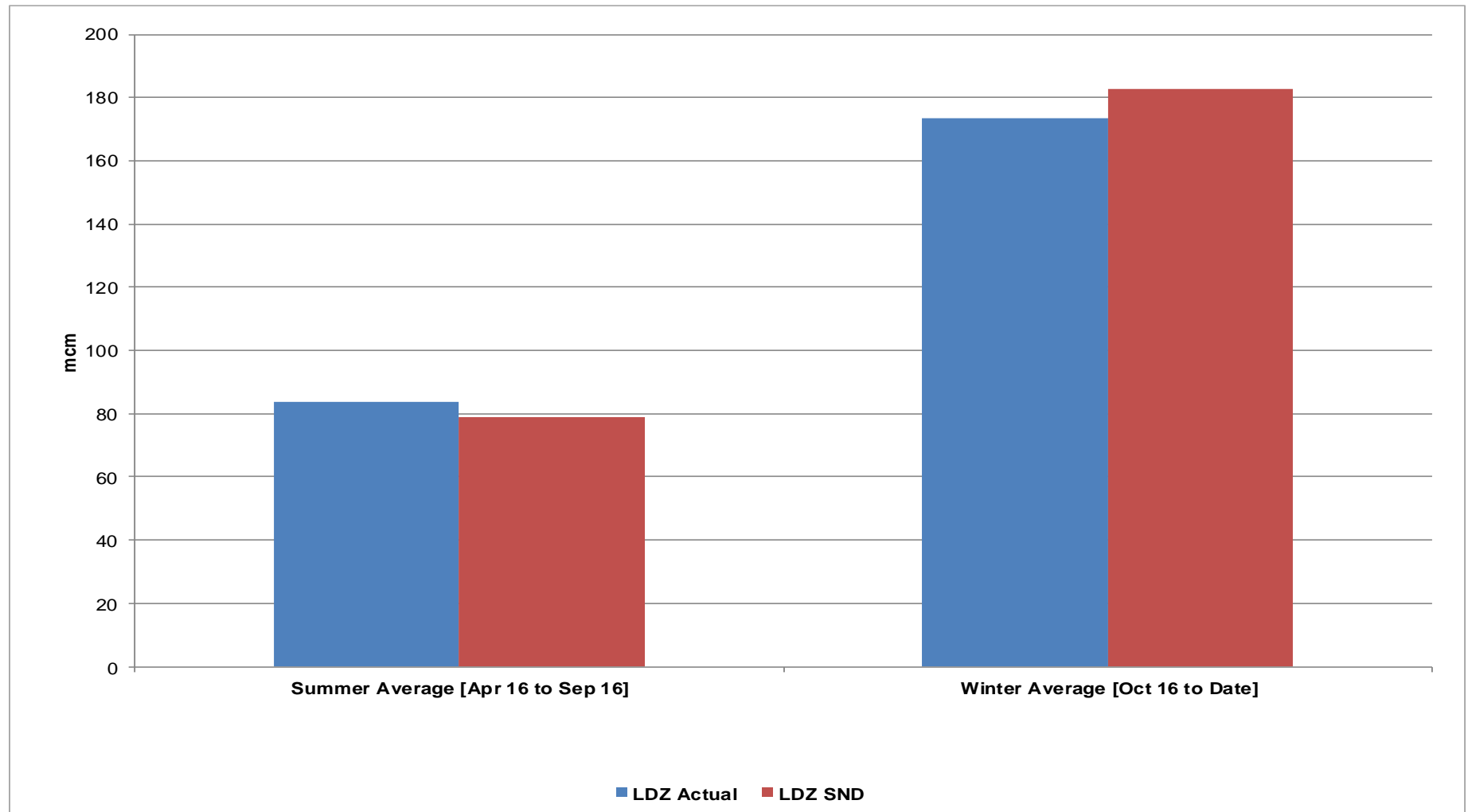
Gas Demand Vs SND / Cold / Warm

1st January 2016 to 31st January 2017



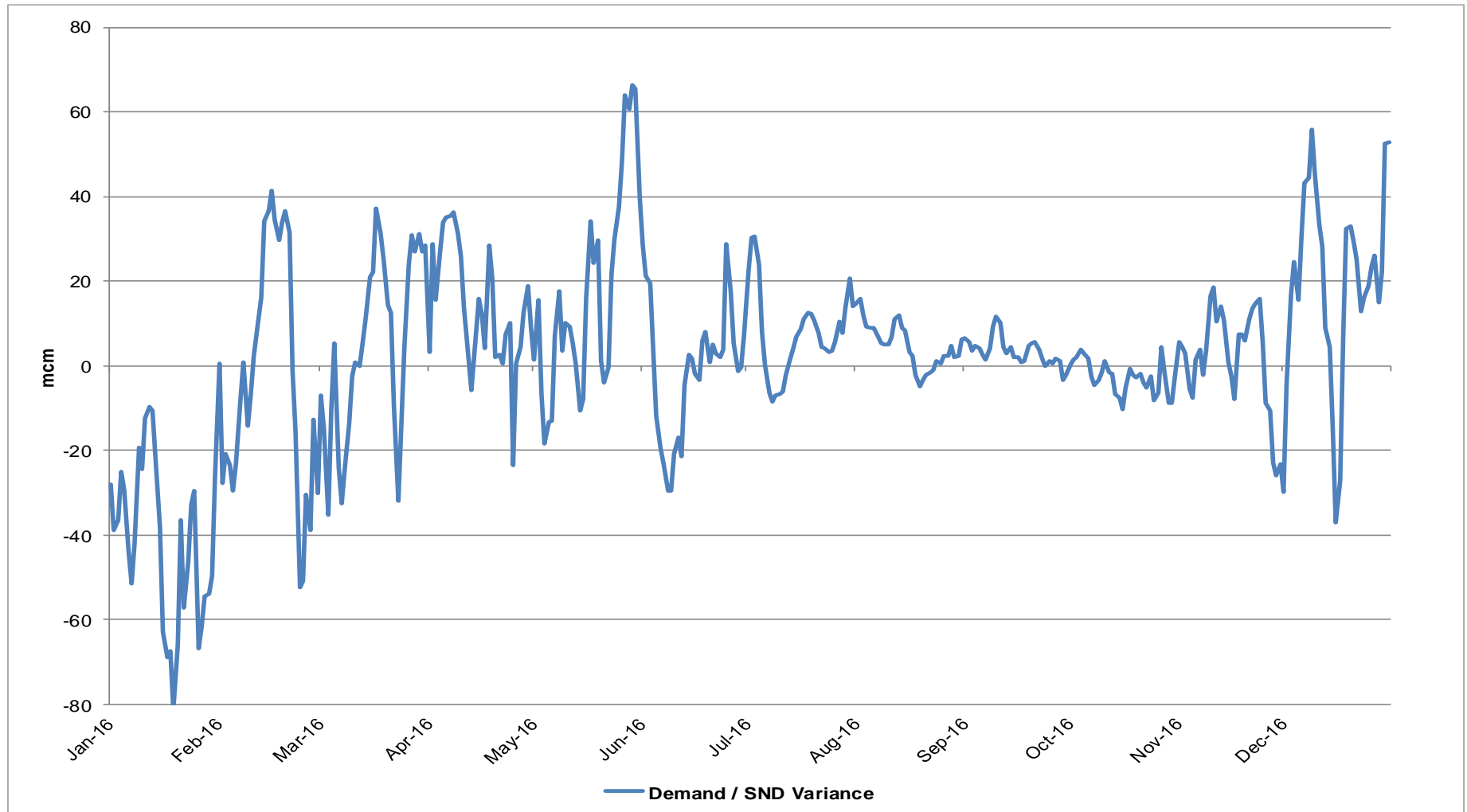
LDZ Actual Demand Vs LDZ SND

1st April 2016 to 31st January 2017



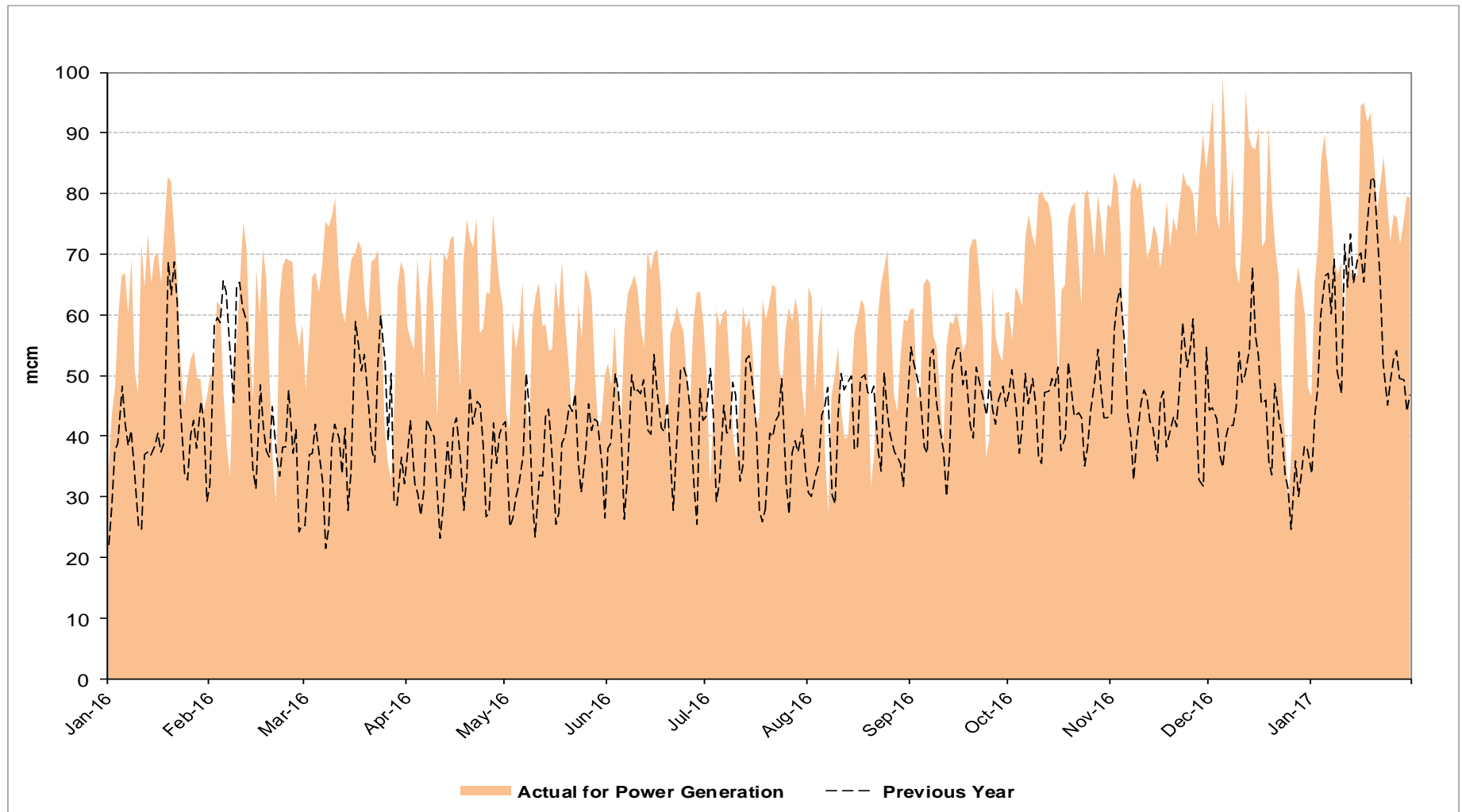
LDZ Demand / LDZ SND Variance

1st January 2016 to 31st January 2017



Gas Consumption for Power Generation

1st January 2016 to 31st January 2017

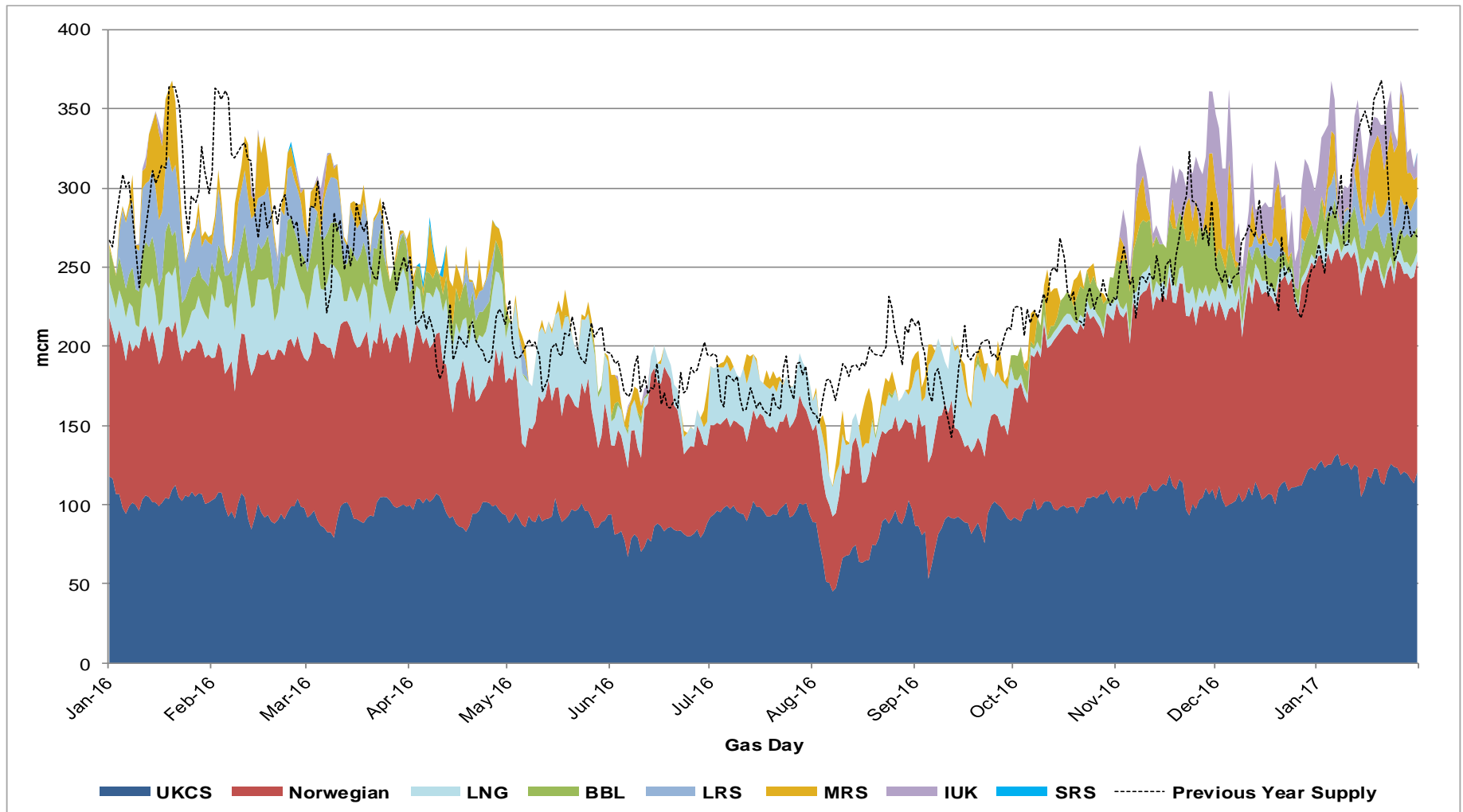


Supplies



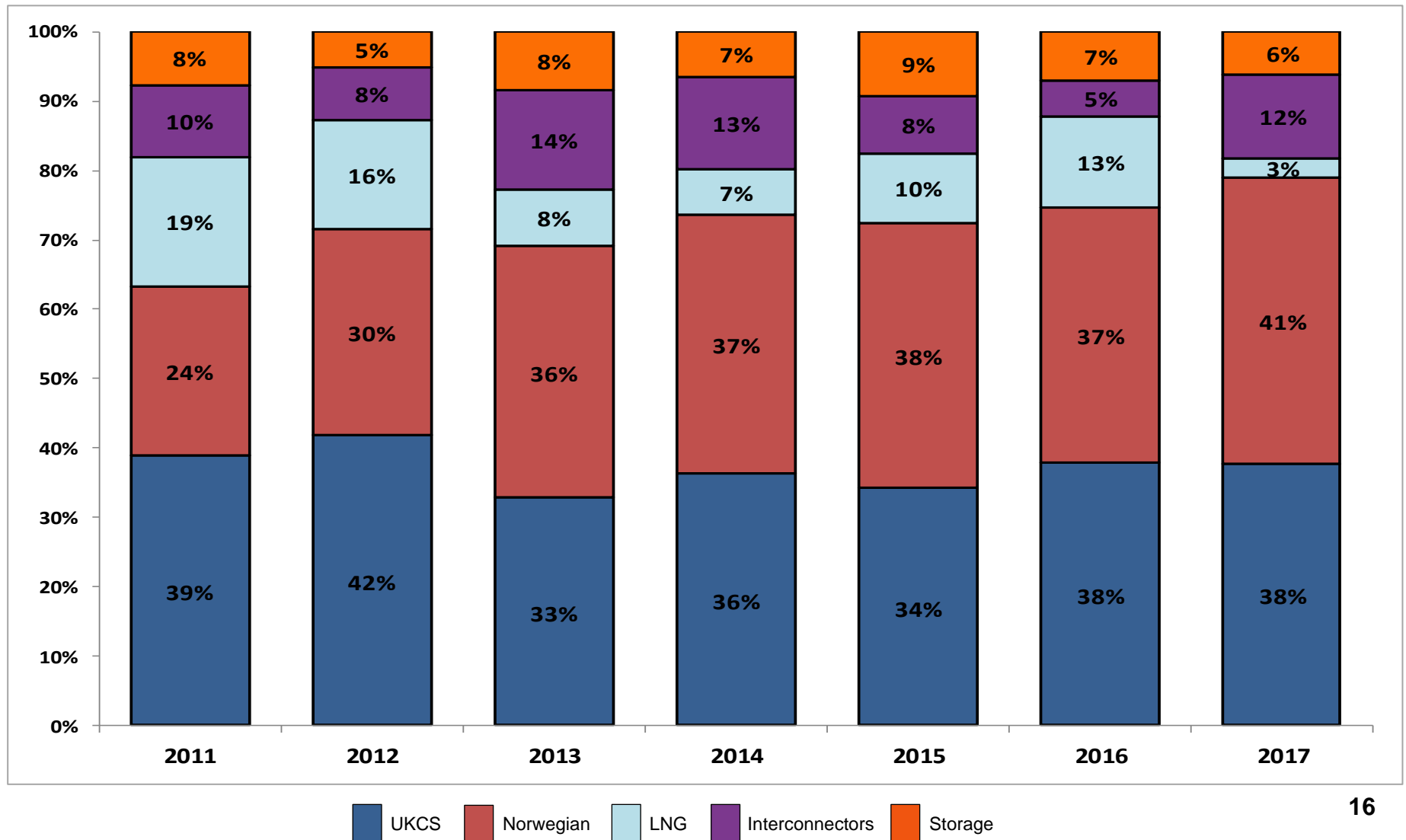
Gas Supply Breakdown

1st January 2016 to 31st January 2017 vs Previous Year



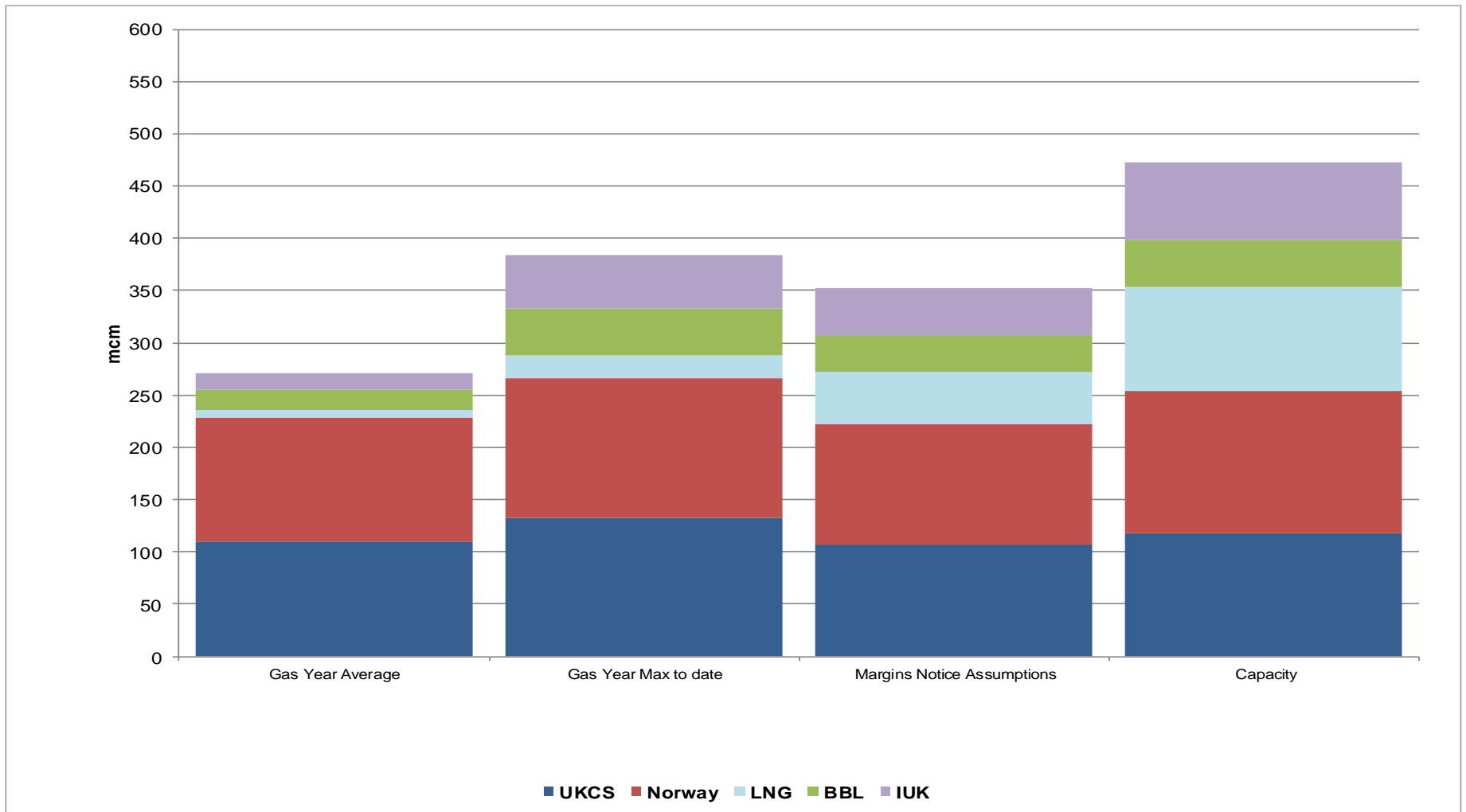
Gas Supply Breakdown

1st October 2016 to 31st January 2017 vs Same Period in Previous Years



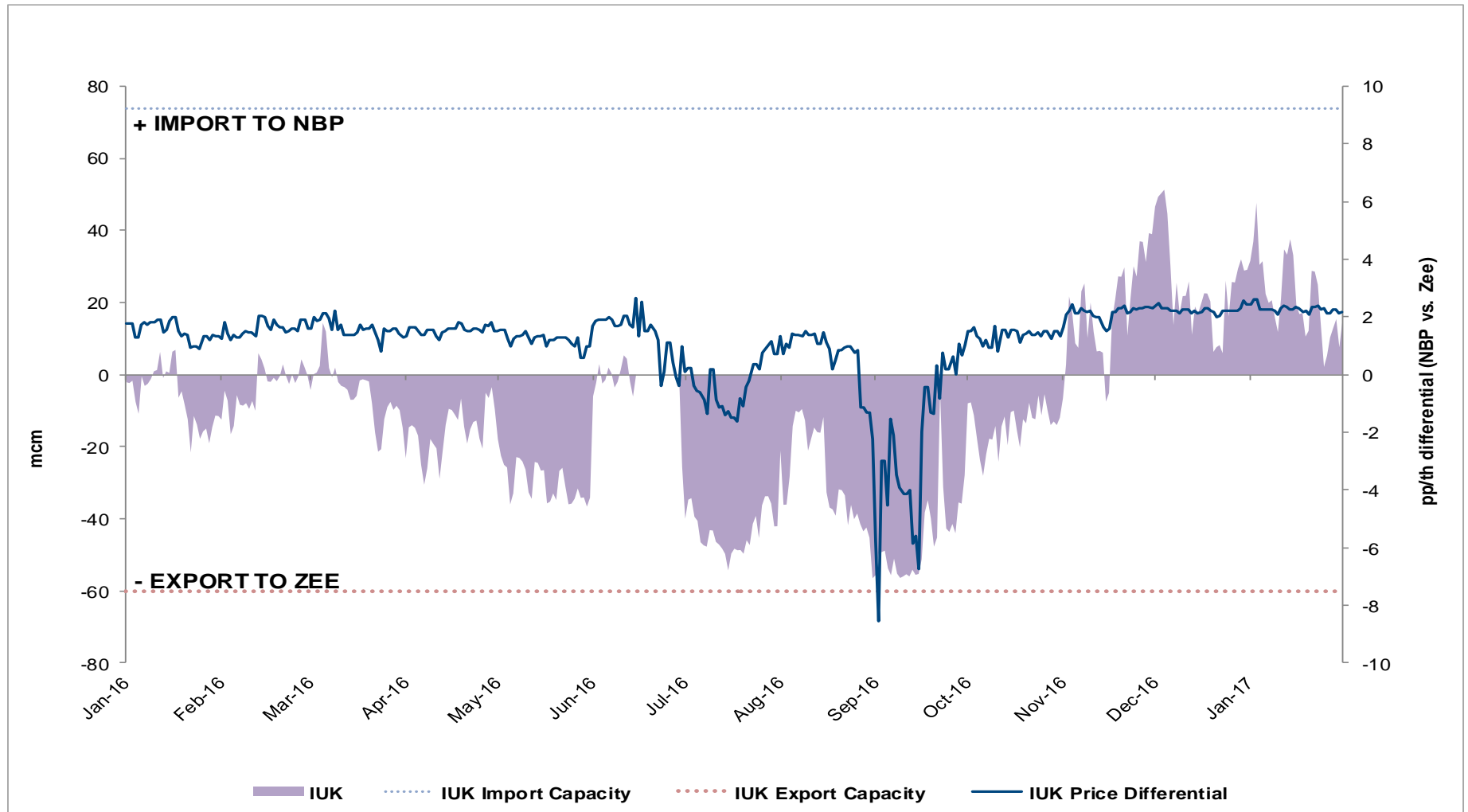
NSS (Non Storage Supply)

1st October 2016 to 31st January 2017



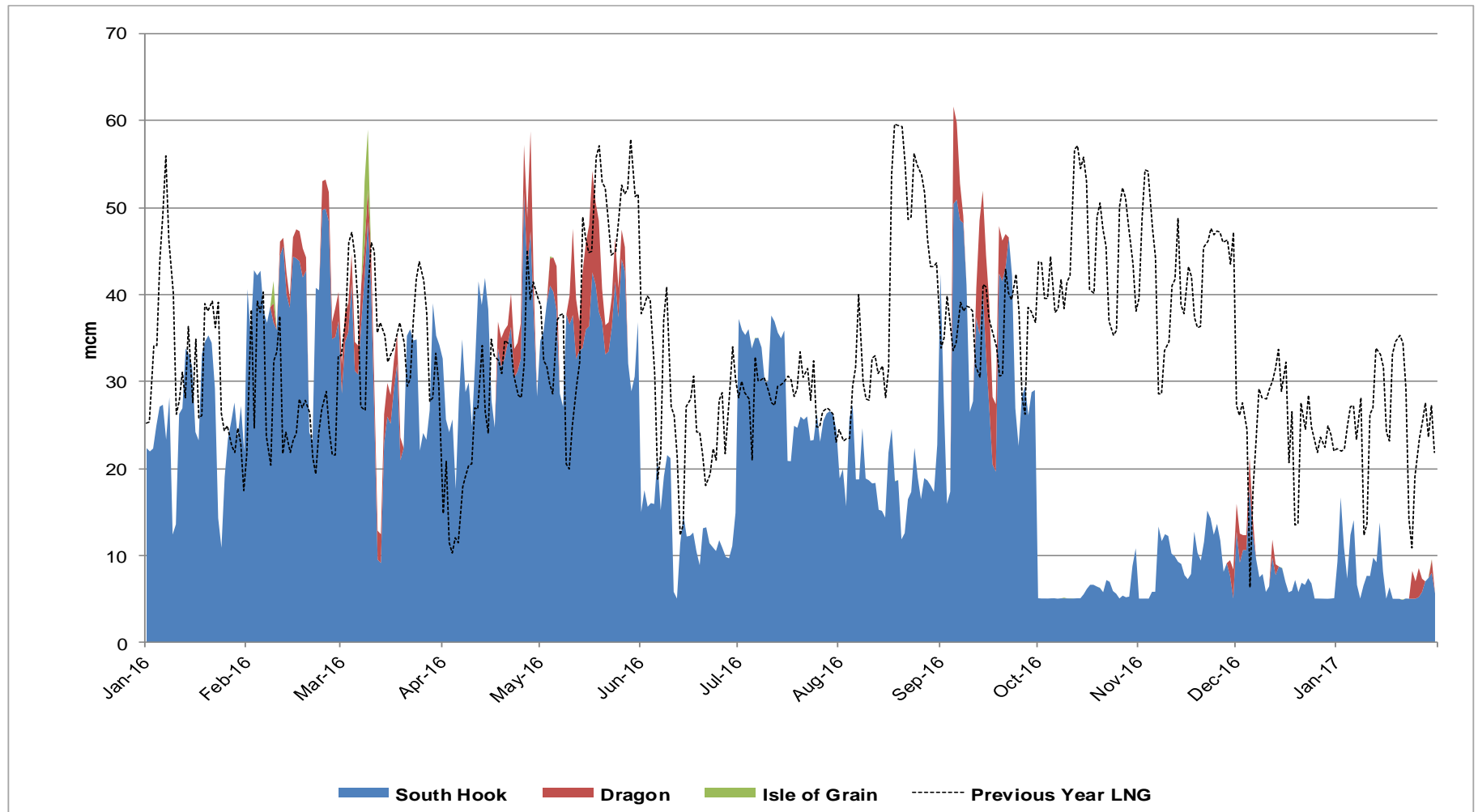
IUK Flows vs NBP & ZEE Price Differential

1st January 2016 to 31st January 2017



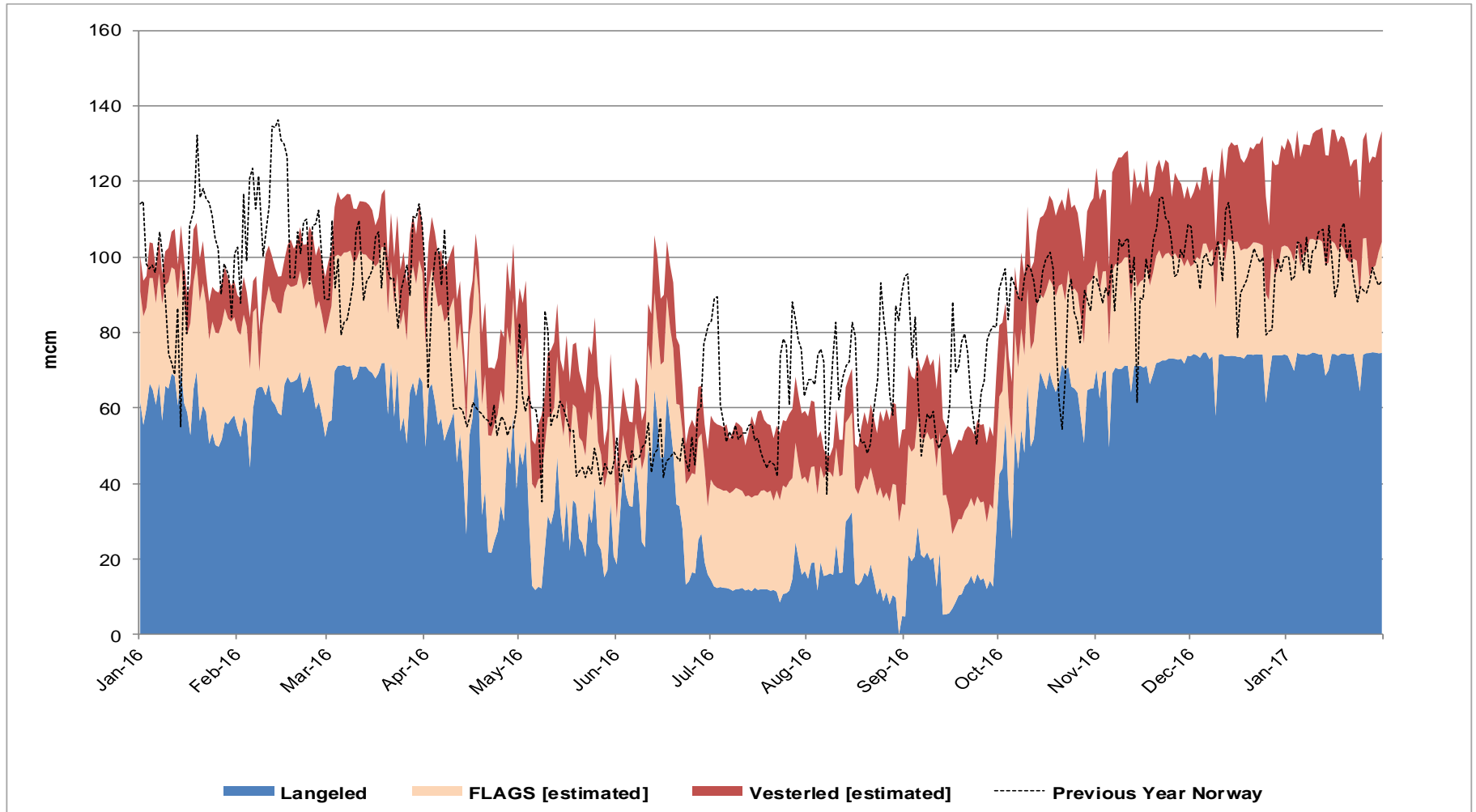
LNG Terminal Flows

1st January 2016 to 31st January 2017



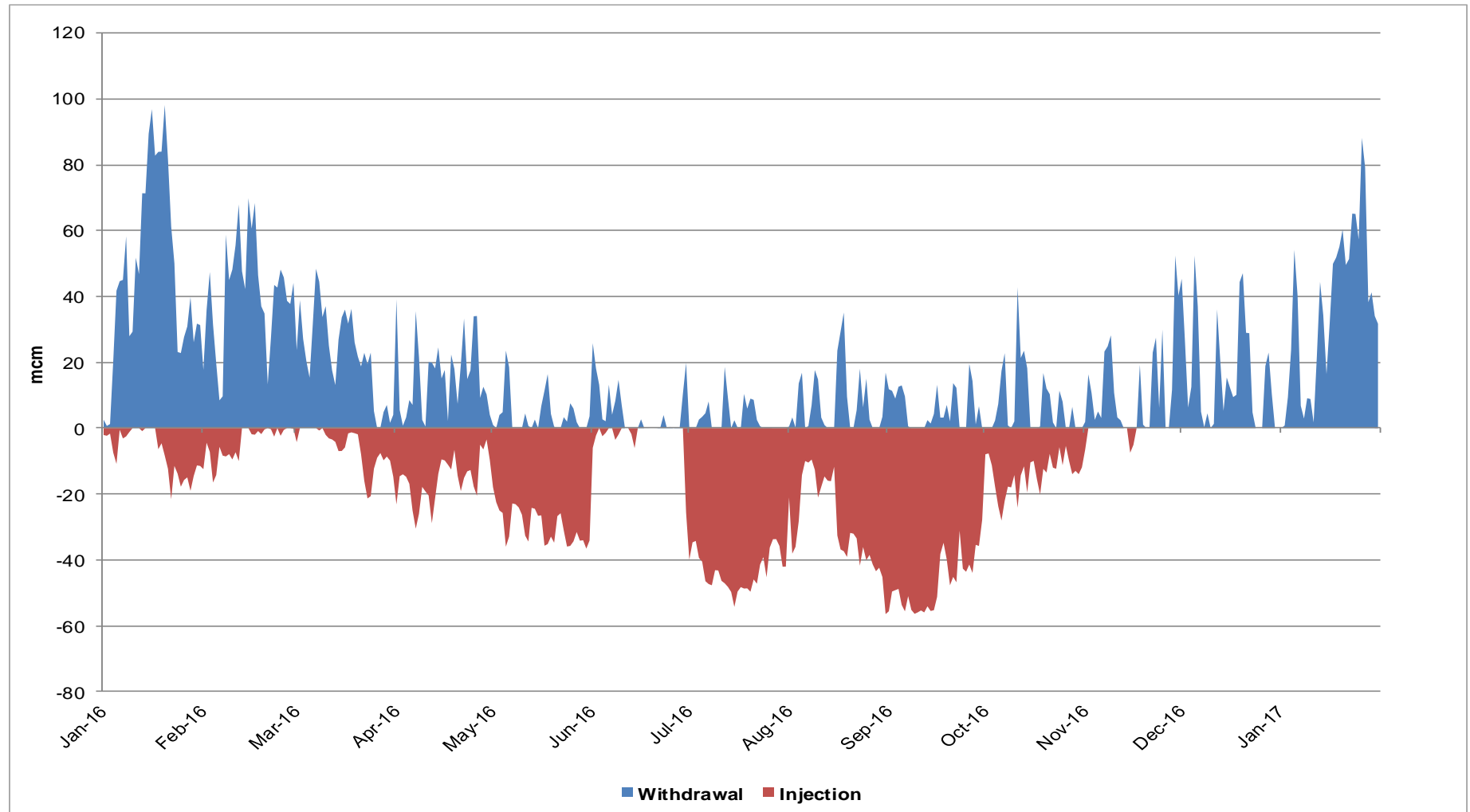
Norwegian Flows

1st January 2016 to 31st January 2017



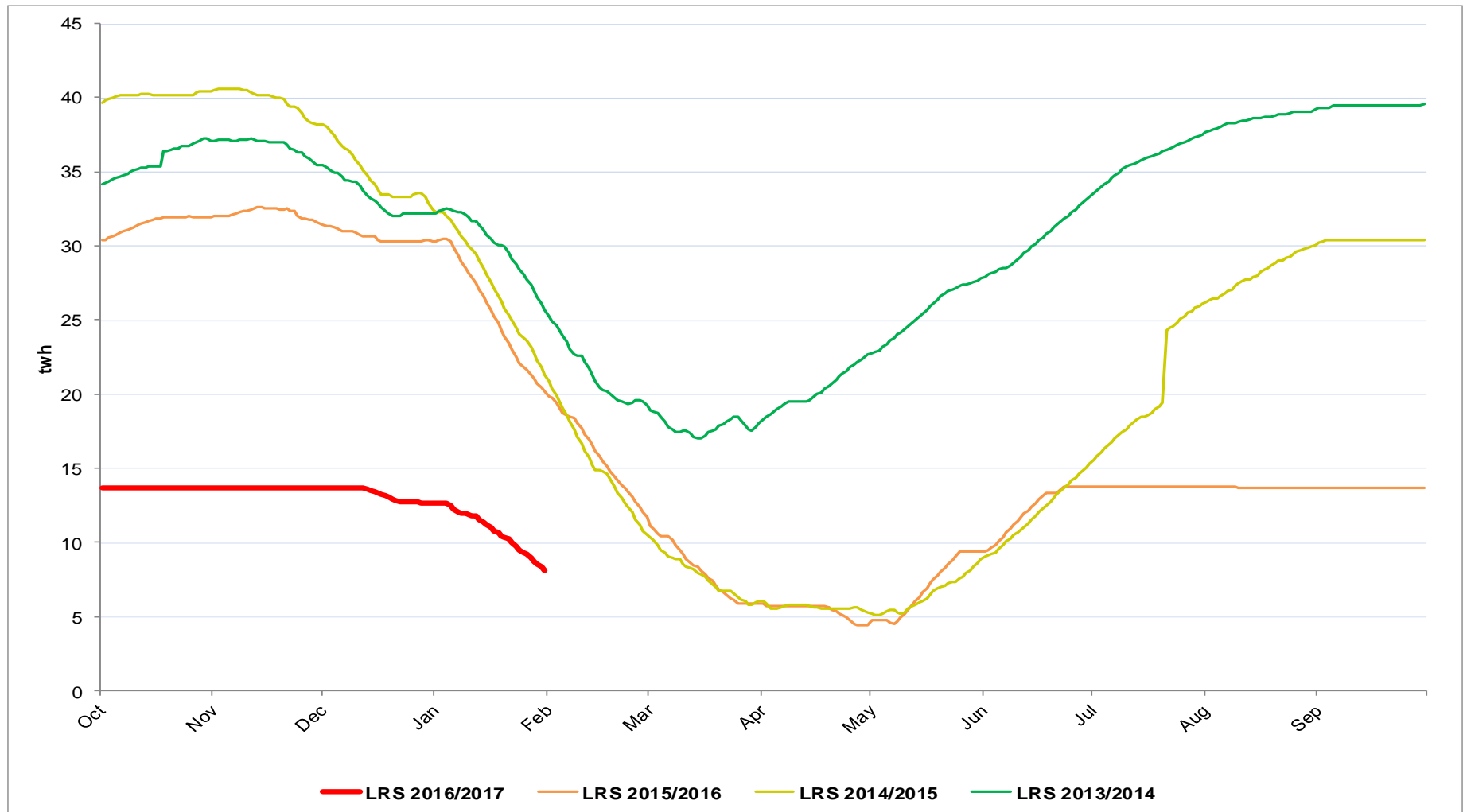
Storage Withdrawal vs Injection

1st January 2016 to 31st January 2017



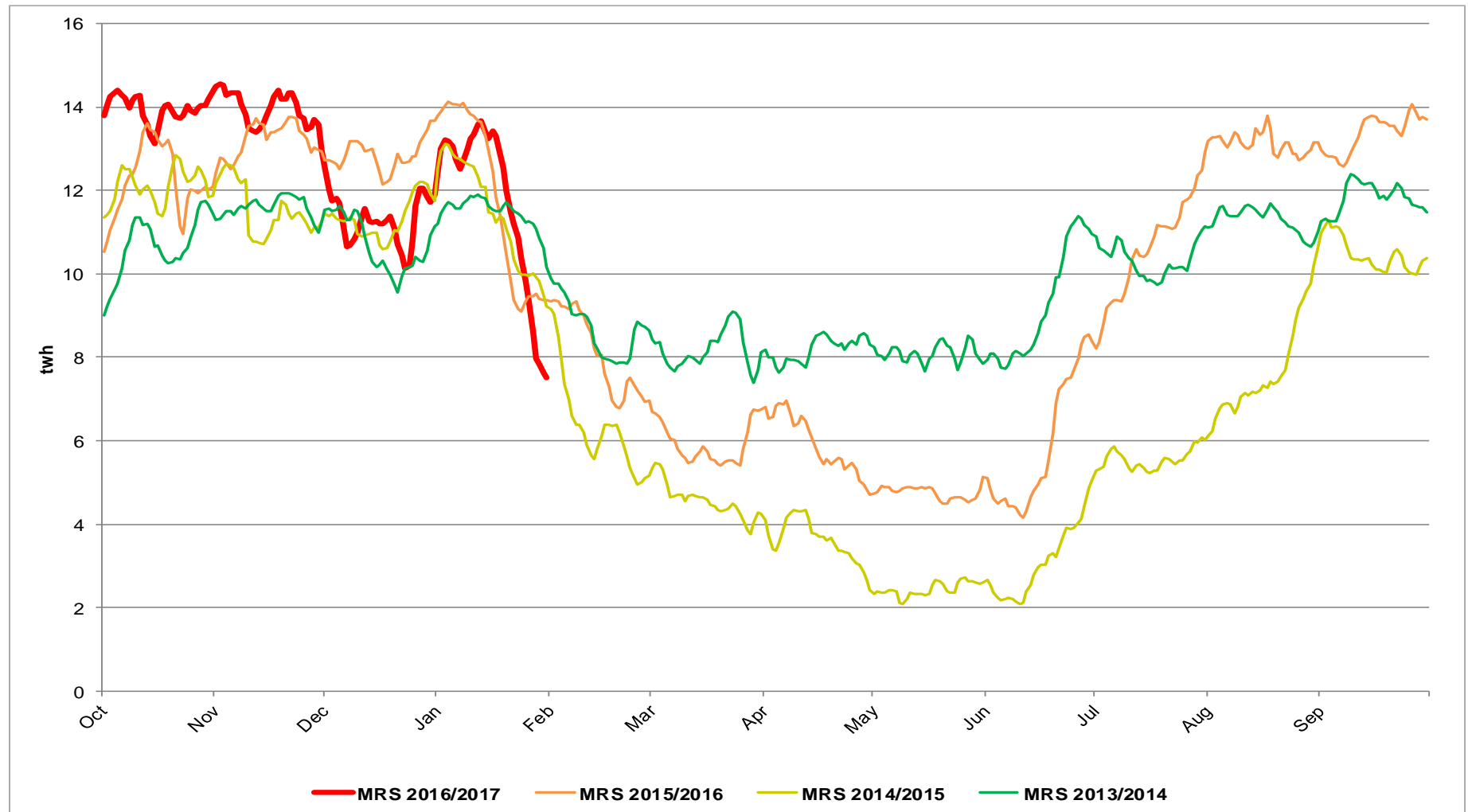
Long Range Storage Stocks (LRS)

1st October 2016 to 31st January 2017 vs Previous Years



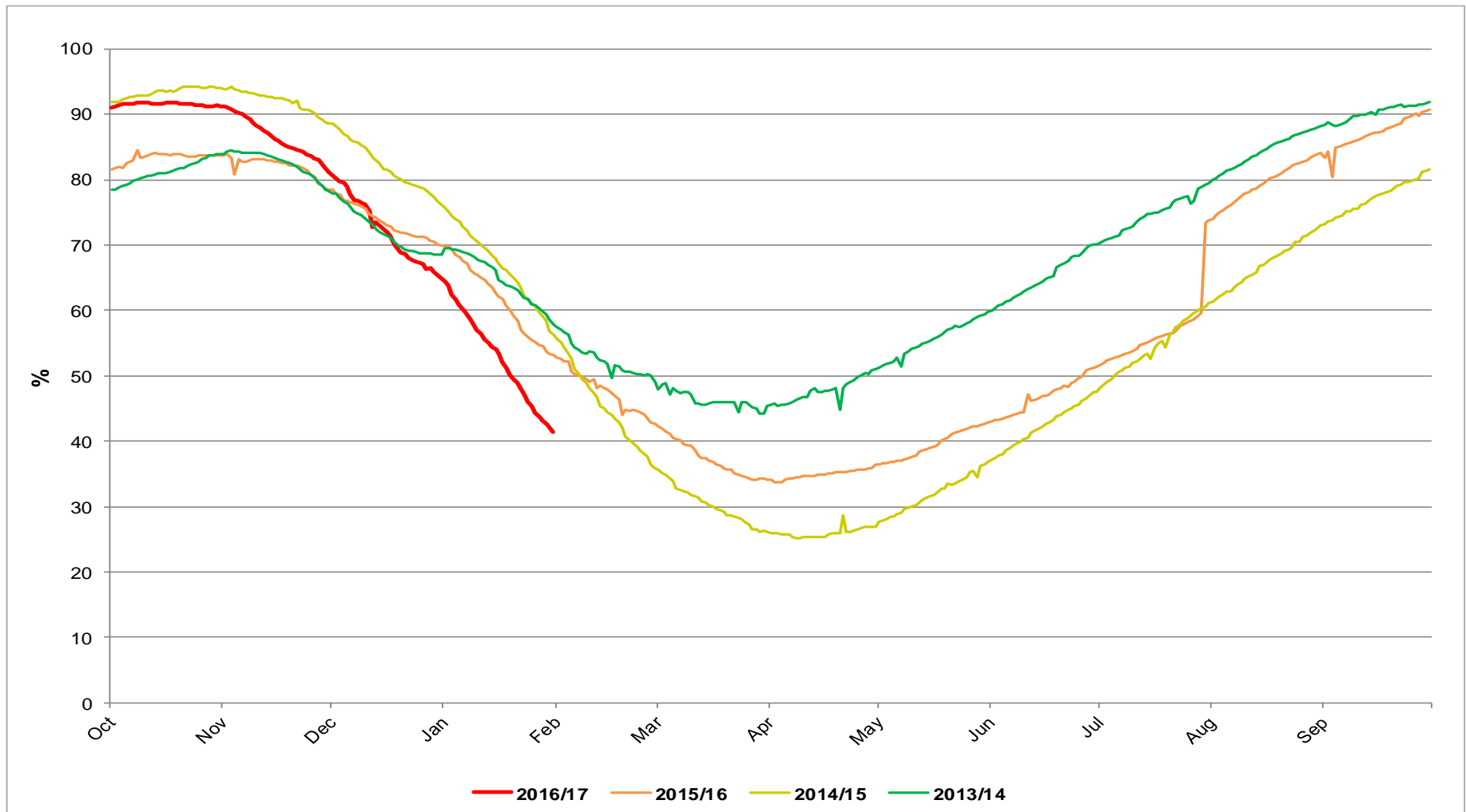
Medium Range Storage Stocks (MRS)

1st October 2016 to 31st January 2017 vs Previous Years



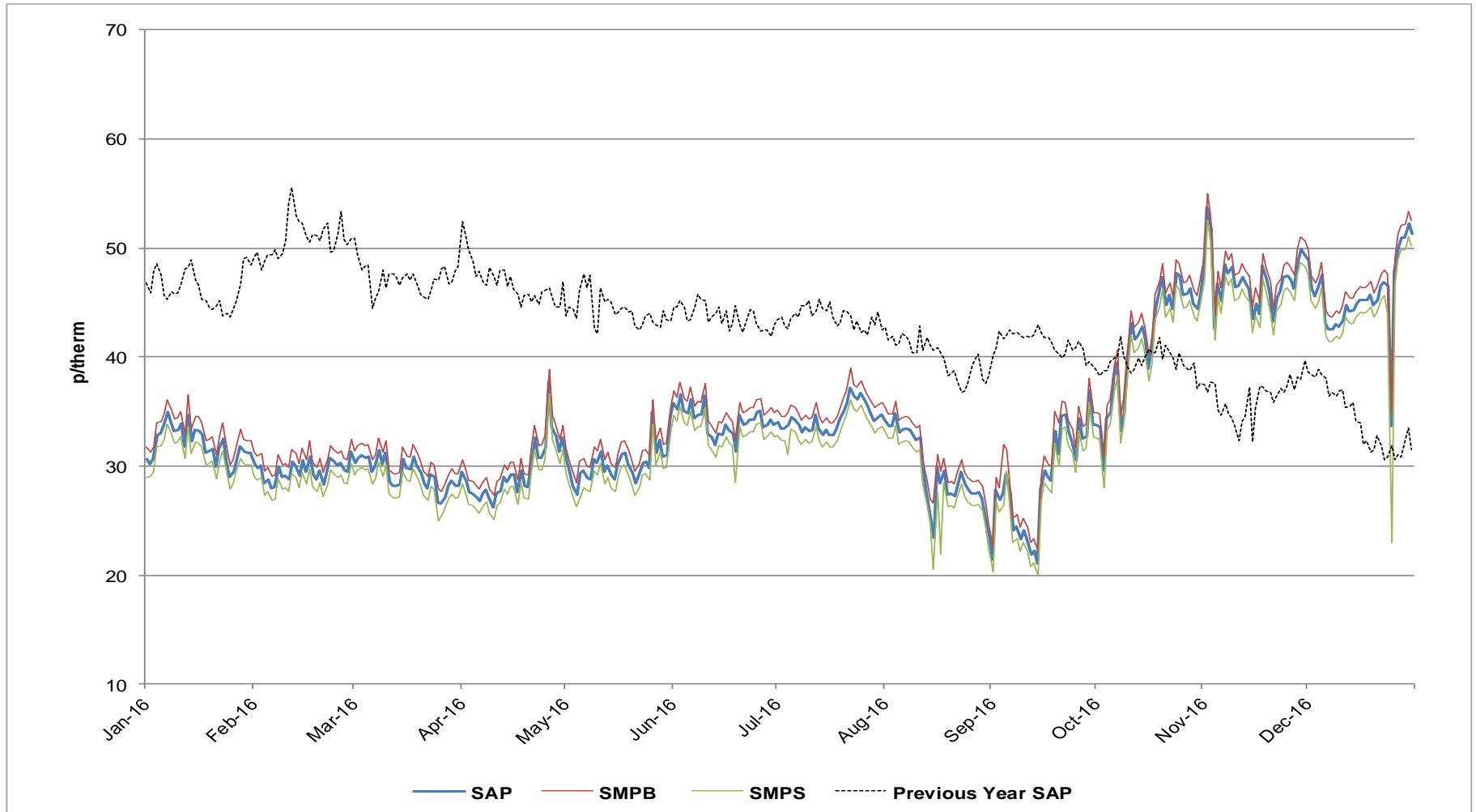
Combined EU Storage Stocks (% Full)

1st October 2016 to 31st January 2017 vs Previous Years



UK Gas Prices

1st January 2016 to 31st January 2017 vs Previous Year



What Operational Issues Affected Users?



Transporter Actions and Neutrality

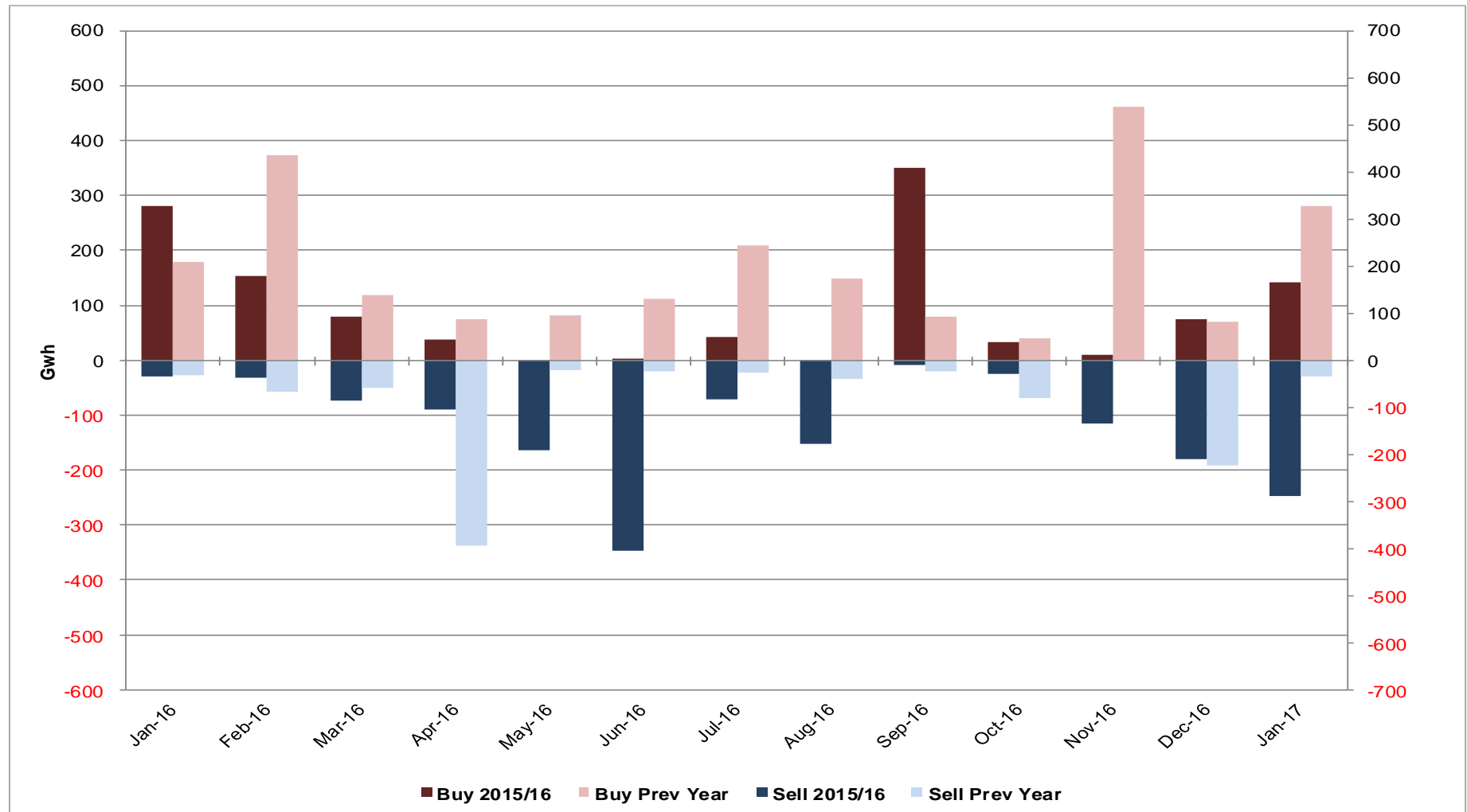


- Energy Balancing
- Capacity

Transporter Energy Traded on the OCM

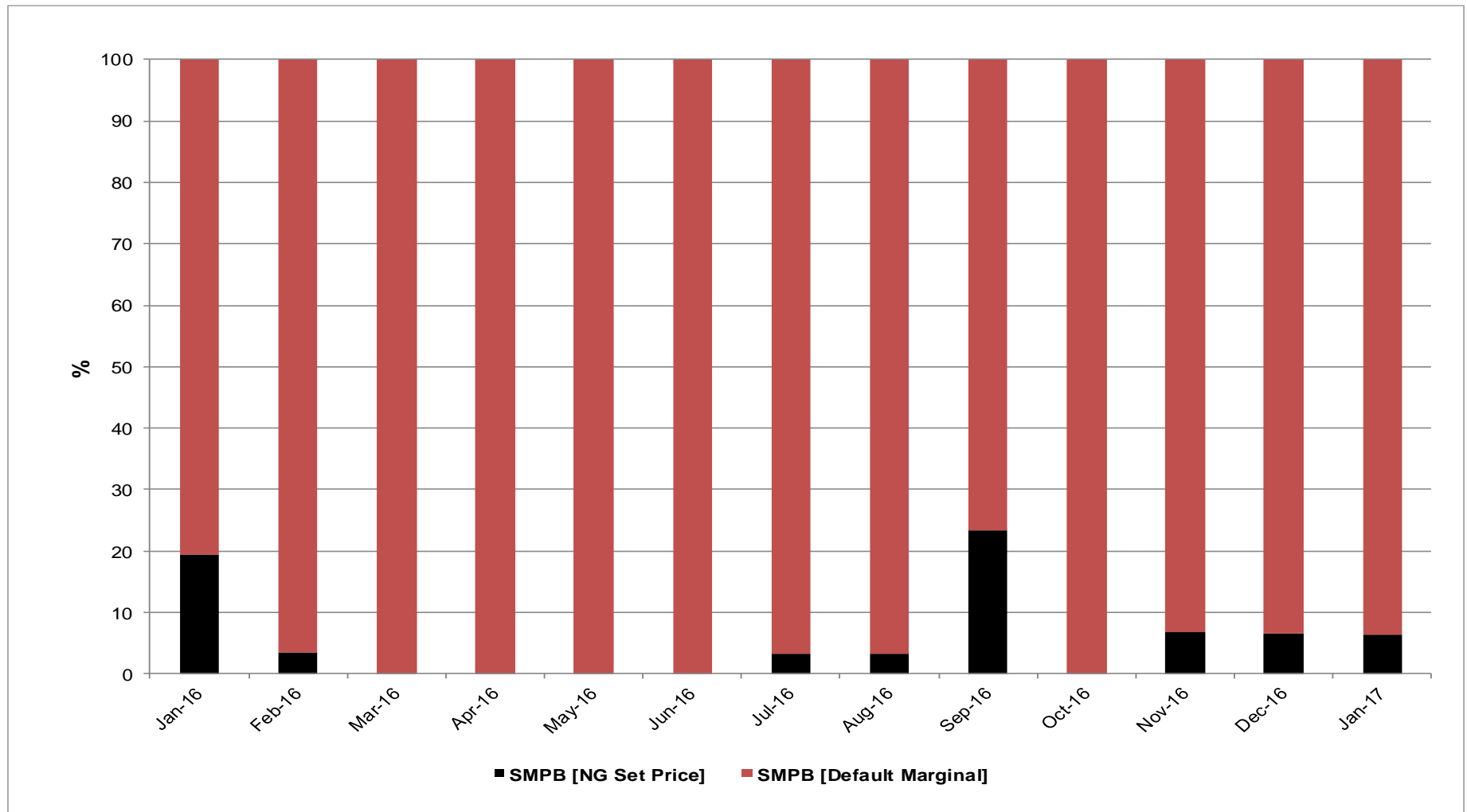
NGG Monthly Buys and Sells

1st January 2016 to 31st January 2017 vs Previous Year



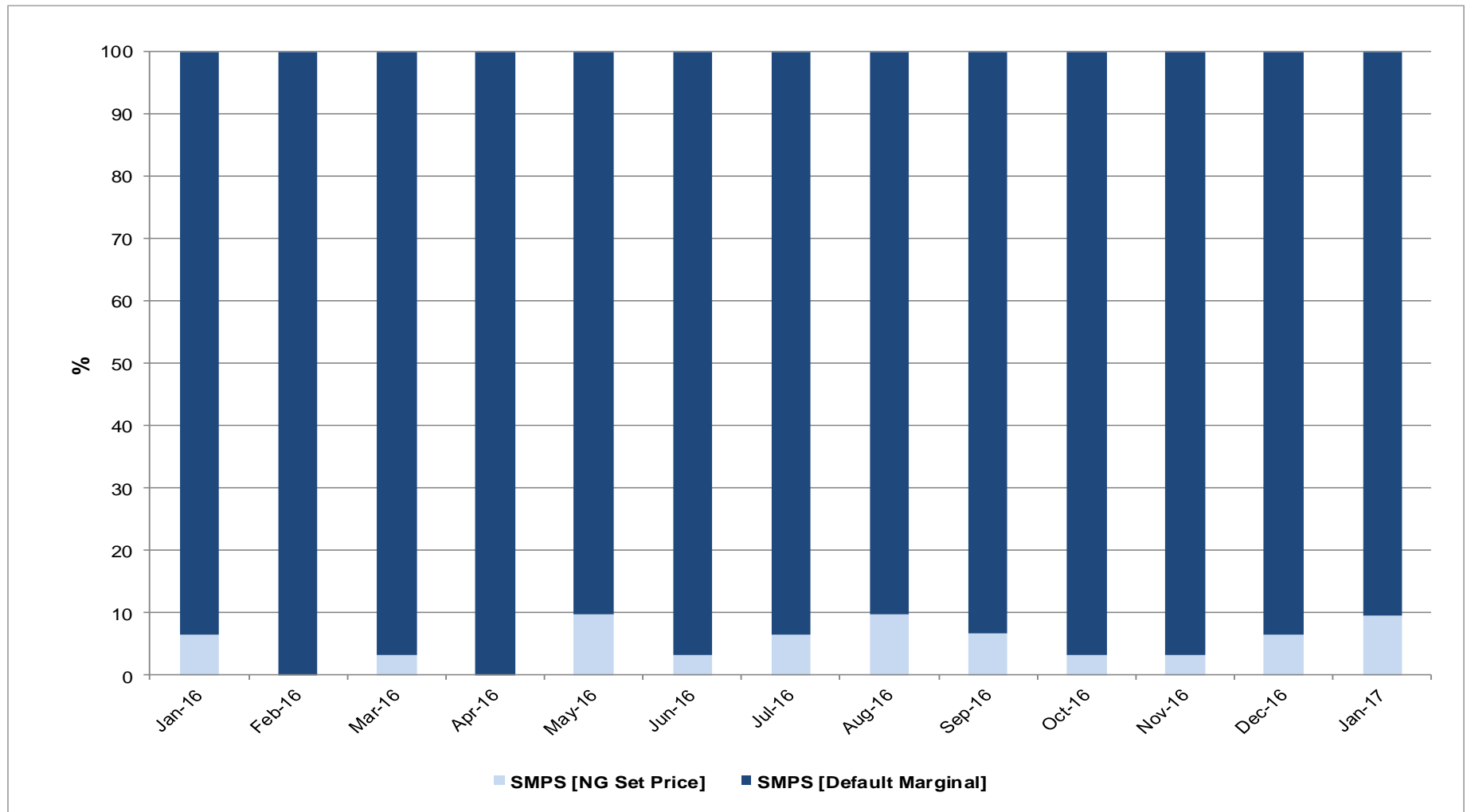
Days of Default SMP Prices (SMPB)

January 2016 to January 2017



Days of Default SMP Prices (SMPS)

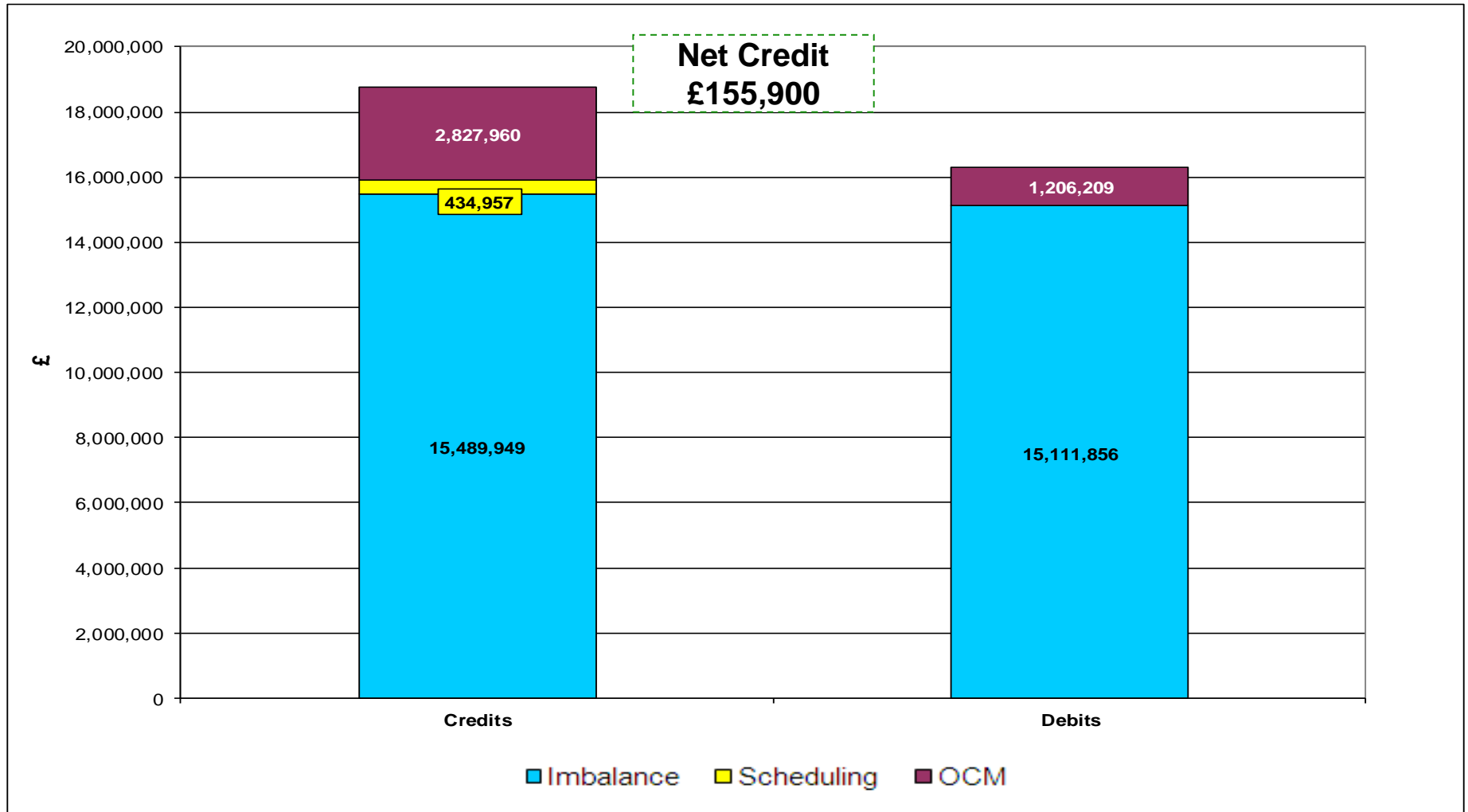
January 2016 to January 2017



Energy Balancing - Balancing Costs

Payments / Charges / Net Credit / Debit (Imbalance / Scheduling / OCM)

December 2016



Energy Balancing - Balancing Costs

Payments / Charges / Net Credit / Debit (Imbalance / Scheduling / OCM)

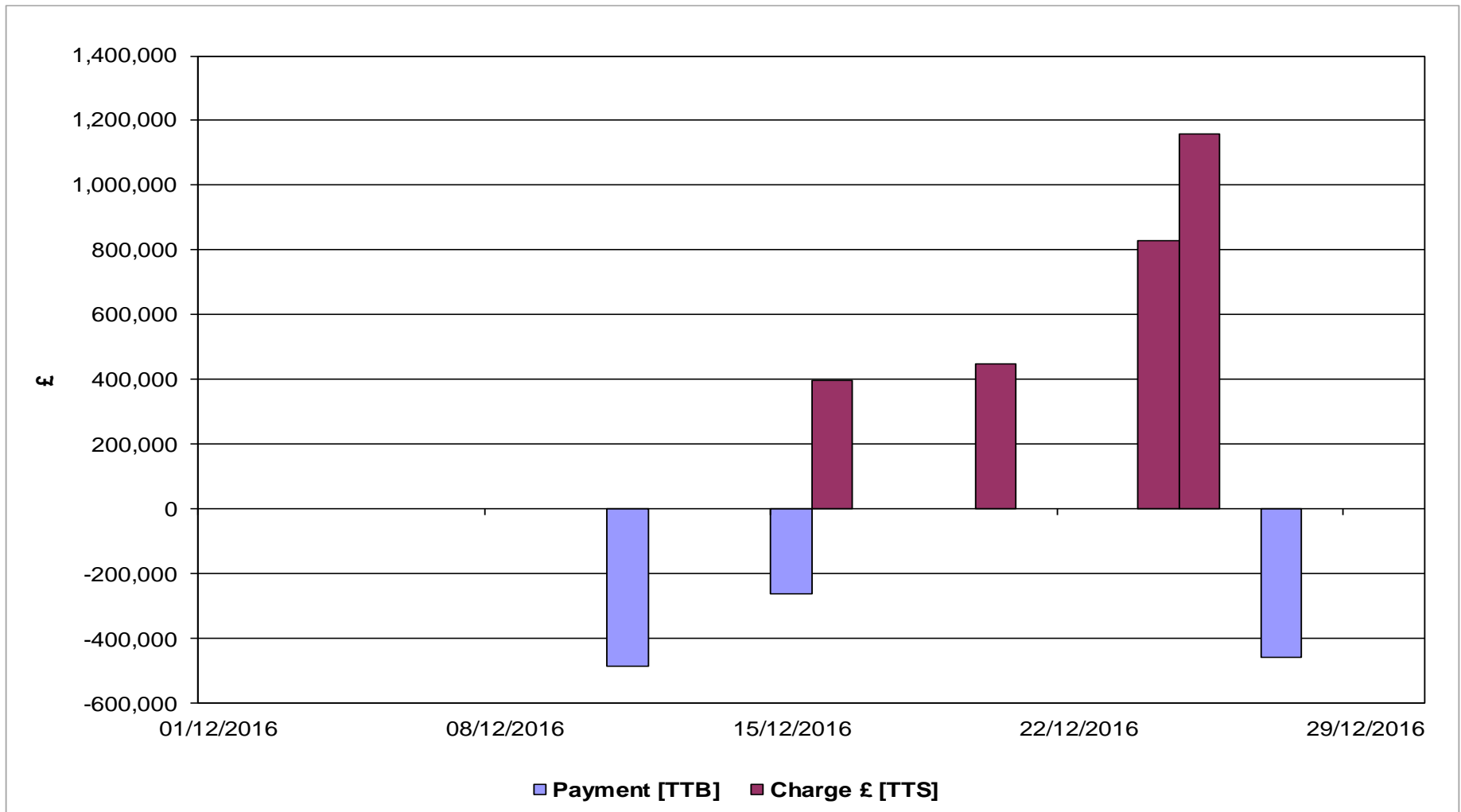
December 2016

		Nov-16
Imbalance	Payment £ [DCS]	-£15,111,855.69
	Charge £ [DCT]	£15,489,949.31
Scheduling	Exit Charge £ [DXS]	£13,744.34
	Exit Charge £ [EXS]	£102,677.94
	Entry Charge £ [ESC]	£318,535.01
OCM	Payment £ [TTB]	-£1,206,209.29
	Charge £ [TTS]	£2,827,959.54
Balancing Costs		£2,434,801.16

Energy Balancing - Balancing Costs

OCM Payments / Charges

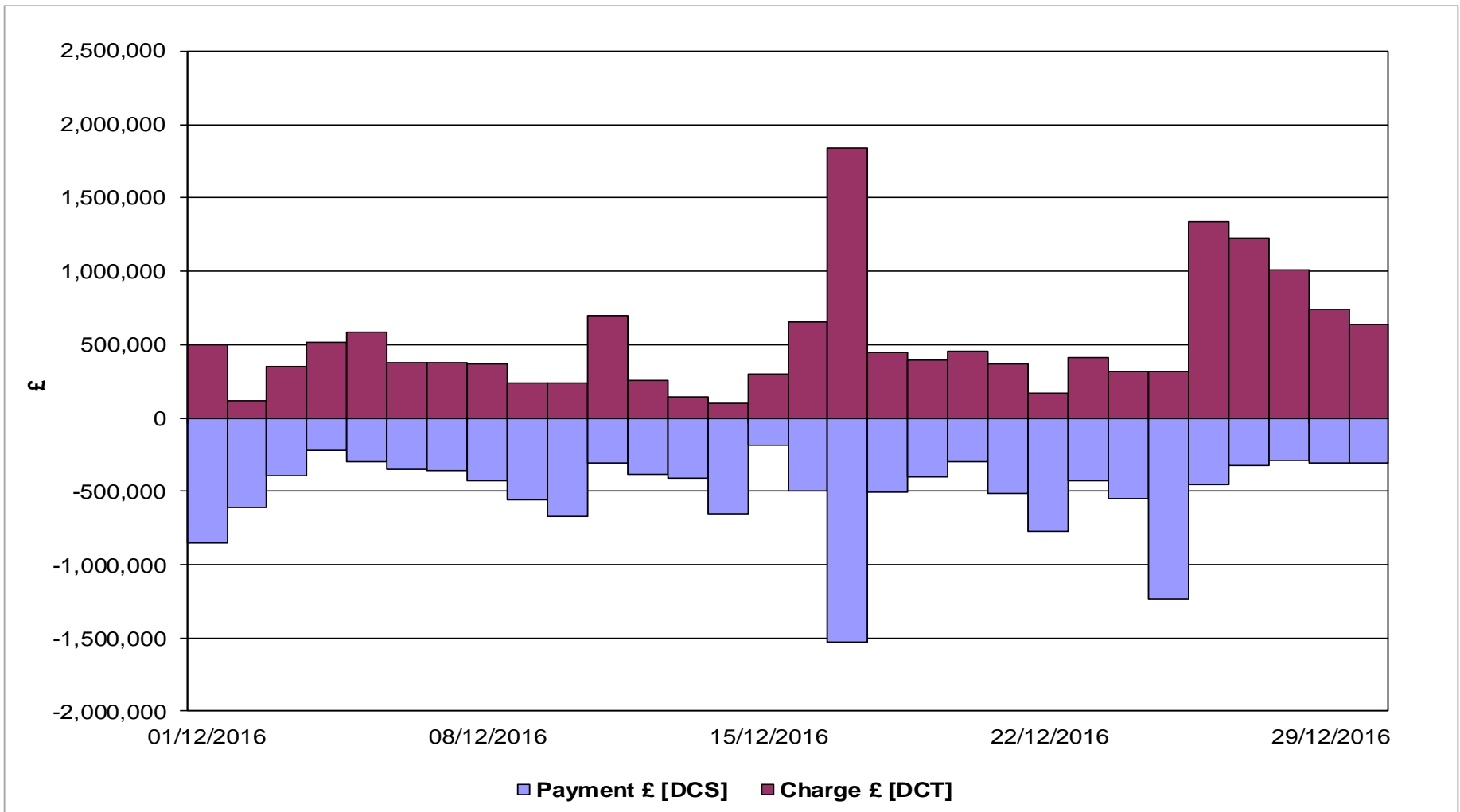
December 2016



Energy Balancing - Balancing Costs

Imbalance Payments / Charges

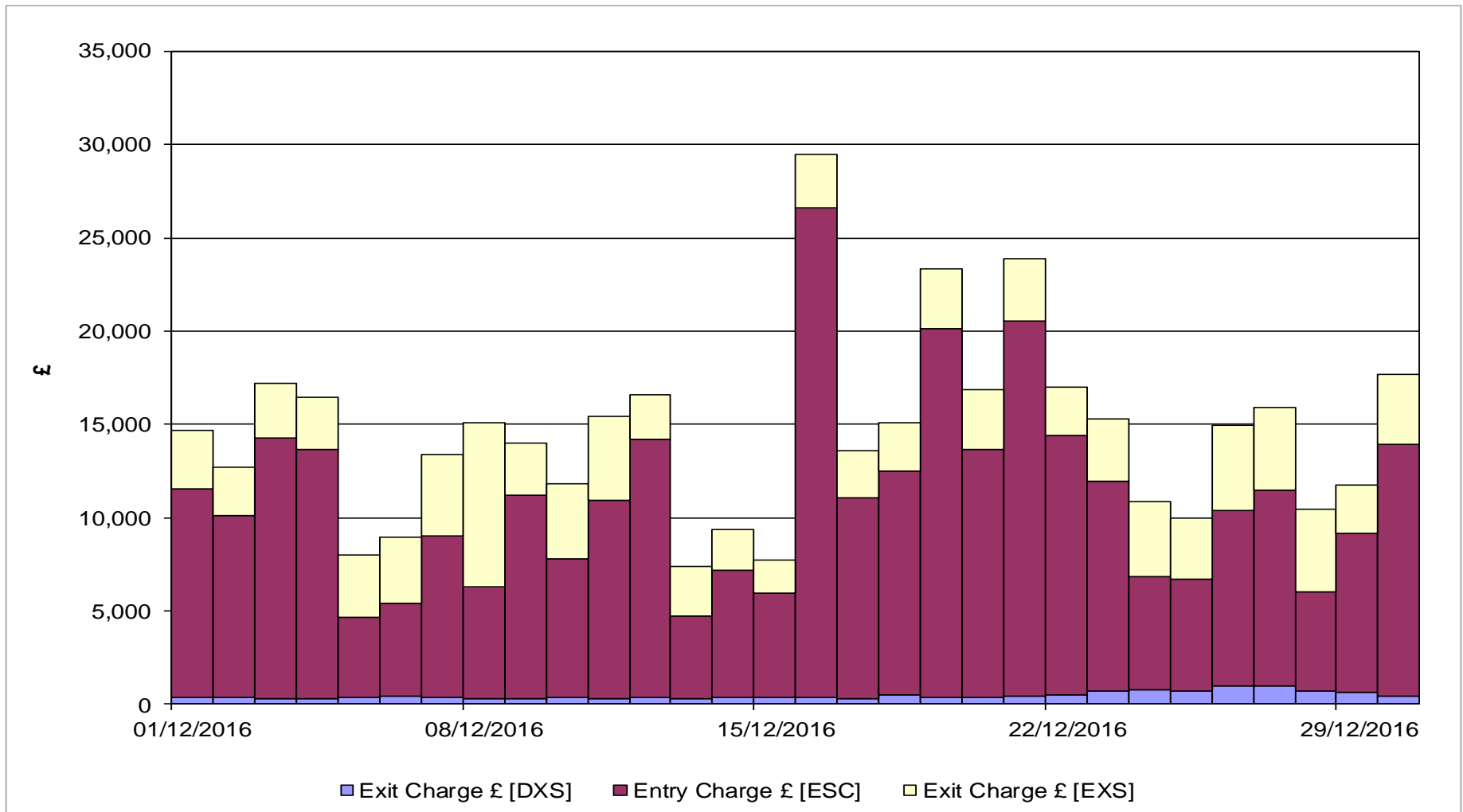
December 2016



Energy Balancing - Balancing Costs

Scheduling Charges

December 2016



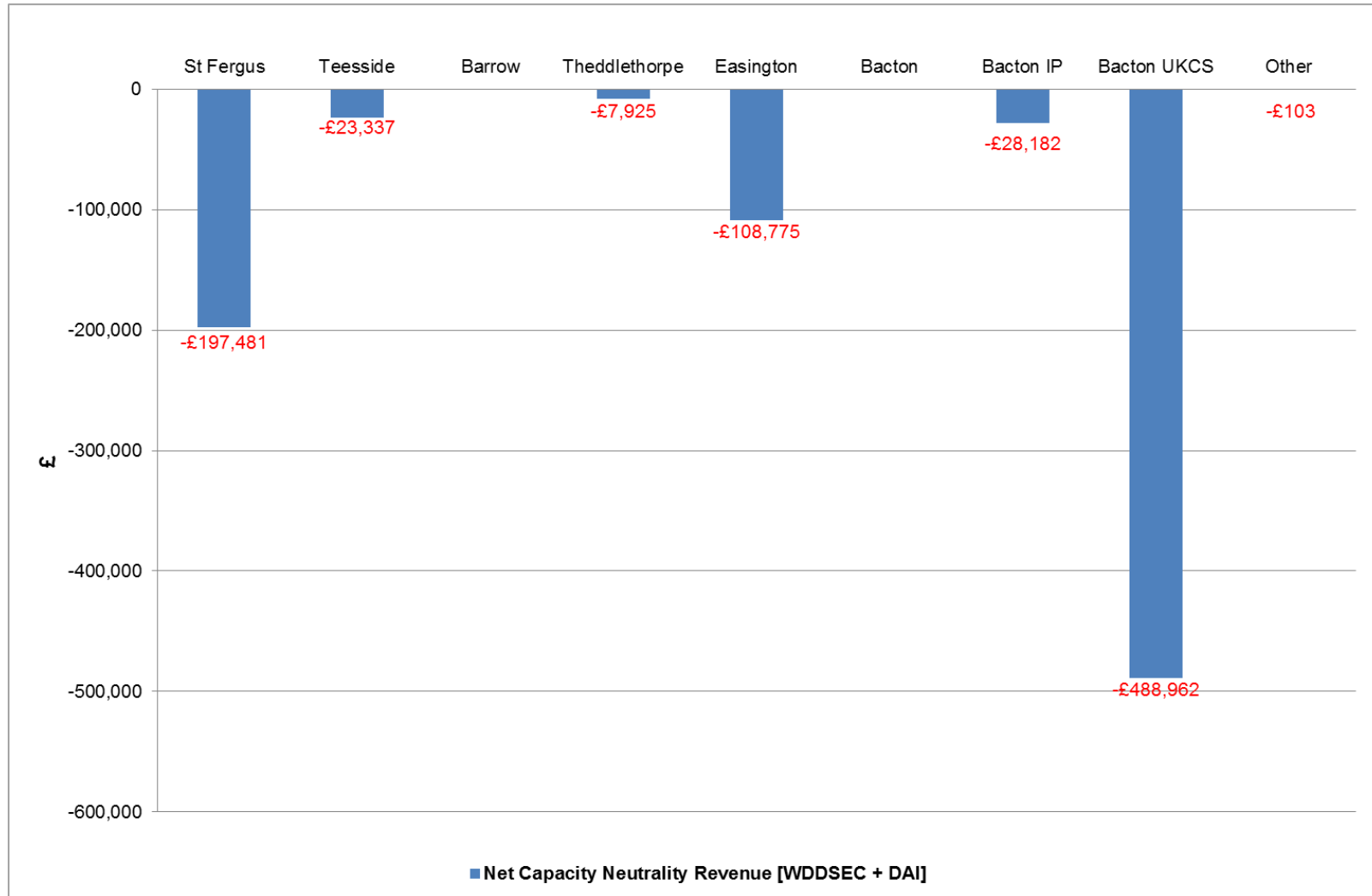
Capacity Neutrality Net Cost / Revenue

1st April 2016 to 31st January 2017

	Revenue/Costs
WDDSEC/DAI Entry Capacity Revenue	-£854,765
Total Entry Constraint Management Operational Costs	£0
Entry Capacity Overrun Revenue	-£1,214,293
Non-Obligated Sales Revenue (Entry only)	-£51,170
Revenue from Locational Sells and PRI Charges	-£14,249
Net Revenue	-£2,134,477

Net Capacity Neutrality Revenue

1st April 2016 to 31st January 2017



Capacity Neutrality

1st April 2016 to 31st January 2017

Month	Entry Cap Overrun Revenue	Non-obligated sales revenue (entry)	Month	Locational Sells and PRI charges revenue
Apr-16	-£110,246	-£148	Apr-16	£0
May-16	-£79,691	-£21	May-16	£0
Jun-16	-£193,290	-£188	Jun-16	£0
Jul-16	£-59,400	-£1,740	Jul-16	£0
Aug-16	-£78,428	-£32	Aug-16	£0
Sep-16	-£38,921	-£495	Sep-16	-£14,249
Oct-16	-£39,985	-£7,426	Oct-16	£0
Nov-16	-£388,711	-£7,426	Nov-16	£0
Dec-16	£225,607	-£4,894	Dec-16	£0
Jan-17	£0	-£28,480	Jan-17	£0
Feb-17			Feb-17	
Mar-17			Mar-17	
Total	-£1,214,293 (FY16-17)	-£51,170 (FY16-17)	Total	£14,249 (FY16/17)